

PERFORMANCE

Processor

Intel® Core™ i7-1255U, 10C (2P + 8E) / 12T, P-core 1.7 / 4.7GHz, E-core 1.2 / 3.5GHz, 12MB

Graphics⁽⁹⁾⁽¹⁰⁾

Integrated Intel Iris® Xe Graphics Functions as UHD Graphics

Chipset

Intel SoC Platform

Memory

1x 8GB SO-DIMM DDR4-3200

Memory Slots

Two DDR4 SO-DIMM slots, dual-channel capable

Max Memory⁽¹¹⁾

Up to 64GB DDR4-3200

Storage

512GB SSD M.2 2242 PCIe® 4.0x4 NVMe® Opal 2.0

Storage Support⁽¹²⁾

One drive, up to 1TB M.2 2242 SSD

Storage Slot

One M.2 2242 PCIe 4.0 x4 slot

Card Reader

MicroSD Card Reader

Audio Chip

High Definition (HD) Audio, Realtek® ALC3287 codec

Speakers

Stereo speakers, 2W x2, Dolby® Audio™

Camera

HD 720p with Privacy Shutter

Microphone

2x, Array

Battery

Integrated 42Wh

Power Adapter

65W USB-C® (3-pin)

DESIGN

Display⁽¹³⁾⁽¹⁴⁾

14" FHD (1920x1080) IPS 250nits Anti-glare, 45% NTSC

Keyboard

Non-backlit, English (UK)

Case Color

Thunder Black

Case Material

PC-ABS (Top), PC-ABS (Bottom)

Dimensions (WxDxH)⁽¹⁵⁾

325.4 x 217 x 19.83 mm (12.81 x 8.54 x 0.78 inches)

Weight⁽¹⁶⁾

Starting at 1.39 kg (3.06 lbs)

SOFTWARE

Operating System

Windows® 11 DG Windows 10 Pro 64, English

CONNECTIVITY

Ethernet

100/1000M (RJ-45)

WLAN + Bluetooth⁽¹⁷⁾⁽¹⁸⁾

Intel Wi-Fi® 6 AX201, 11ax 2x2 + BT5.1

WWAN

WWAN Upgradable to 4G

Standard Ports

- 1x USB 3.2 Gen 1
- 1x USB 3.2 Gen 1 (Always On)
- 1x USB-C 3.2 Gen 1 (support data transfer, Power Delivery 3.0 and DisplayPort™ 1.4)
- 1x Thunderbolt™ 4 / USB4® 40Gbps (support data transfer, Power Delivery 3.0 and DisplayPort 1.4)
- 1x HDMI® 2.1, up to 4K/60Hz
- 1x microSD card reader
- 1x Ethernet (RJ-45)
- 1x Headphone / microphone combo jack (3.5mm)

Optional Ports (configured)

- 1x Nano-SIM Card Slot
- 1x Smart Card Reader

Docking

Various docking solutions supported via Thunderbolt or USB-C.

For more compatible docking solutions, please visit [Docking for ThinkPad® L14 Gen 3 \(Intel\)](#)

SECURITY & PRIVACY

Smart Card Reader

Smart Card Reader

Security Chip

Discrete TPM 2.0 Enabled

Fingerprint Reader

Touch Style, Match-on-Chip, Integrated in Power Button

Physical Locks

Kensington® Nano Security Slot™, 2.5 x 6 mm

Other Security

- Camera privacy shutter
- Glance by Mirametrix®
- Tile ready

MANAGEABILITY

System Management

Non-vPro®

SERVICE

Base Warranty

3-year, Courier or Carry-in

CERTIFICATIONS

Green Certifications⁽¹⁹⁾⁽²⁰⁾

- ENERGY STAR® 8.0
- EPEAT™ Gold Registered
- ErP Lot 3
- TCO Certified
- RoHS compliant

Mil-Spec Test

MIL-STD-810H military test passed

MODEL

TopSeller	: Yes	Announce Date	: 2022-08-18
EAN / UPC / JAN	: 0196802804158	End of Support	: 2028-12-12



intel

To see more note information, please link to https://psref.lenovo.com/Detail/ThinkPad_L14_Gen_3_Intel?M=21C10081UE.

· Lenovo reserves the right to change specifications or other product information without notice.
· Product image on this page is a sample, it may not match the real color of this model
· Battery life is an estimated maximum. Actual battery life may vary based on many factors, including screen brightness, active applications, features, power management settings, battery age and conditioning, and other customer preferences

Premier Support - A direct 24x7x365 line to our most elite technicians.



Advanced technical support, 24x7x365, in more than 100 markets



Technical Account Managers for proactive relationship and escalation management



Comprehensive hardware & OEM software support



Priority on service delivery and repair parts



Single point of contact for simplified end-to-end case management



Lenovo Service Connect Portal for customized reporting and product support

Accidental Damage Protection - Protection of your PC from the unexpected.

Experience shows that a significant portion of devices may be damaged (and not covered under warranty) in the first three years. Lenovo's Accidental Damage Protection service covers accidents beyond the system warranty such as drops, spills, bumps and even electrical surges. Make sure your new device has maximum protection, avoid unplanned costs and get peace of mind.

Base Warranty - Included with the systems you purchase, default 1- or 3-year coverage window.

Warranty Extensions & Upgrades - Service and protection that's right for your circumstances.

- Pick Up & Return Courier
- Onsite Support
- Technician Installed Customer
- Replaceable Unit Service
- International Warranty Upgrade

Lenovo may not offer the products, services or features discussed in this document in all regions. Lenovo may withdraw an offering at any time. Information is subject to change without notice. Consult your local representative for information on offerings available in your area. Lenovo reserves the right to change specifications or other product information without notice. Lenovo is not responsible for photographic or typographical errors. Lenovo provides this publication "as is" without warranty of any kind, either express or implied, including the implied warranties of merchantability or fitness for a particular purpose.

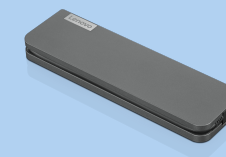
Recommended Accessories



ThinkPad USB-C Dock Gen 2

40AS0090US

- Lenovo understands that modern business depends on a wide variety of PC's and even brands to meet their business needs. To make this easier Lenovo USB-C dock is compatible with Lenovo notebooks as well as note...



Lenovo USB-C Mini Dock_US

40AU0065US

Expand Your Potential with An Universal Mini Dock; Lenovo understands that modern business depends on a wide variety of PC's and even brands to meet their business needs. To make this easier Lenovo USB-C Mini dock is ...

For a full list of accessories and services, please visit:
<https://smartfind.Lenovo.com>

Lenovo

PSREF
Product Specifications
Reference