

## PERFORMANCE

### Processor

Intel® Core™ i5-1235U, 10C (2P + 8E) / 12T, P-core 1.3 / 4.4GHz, E-core 0.9 / 3.3GHz, 12MB

### Graphics<sup>(8)(9)</sup>

Integrated Intel Iris® Xe Graphics Functions as UHD Graphics

### Chipset

Intel SoC Platform

### Memory

1x 8GB SO-DIMM DDR4-3200

### Memory Slots

Two DDR4 SO-DIMM slots, dual-channel capable

### Max Memory<sup>(10)</sup>

Up to 64GB DDR4-3200

### Storage

512GB SSD M.2 2242 PCIe® 4.0x4 NVMe® Opal 2.0

### Storage Support<sup>(11)</sup>

One drive, up to 1TB M.2 2242 SSD

### Storage Slot

One M.2 2242 PCIe 4.0 x4 slot

### Card Reader

MicroSD Card Reader

### Audio Chip

High Definition (HD) Audio, Realtek® ALC3287 codec

### Speakers

Stereo speakers, 2W x2, Dolby® Audio™

### Camera

HD 720p with Privacy Shutter

### Microphone

2x, Array

### Battery

Integrated 42Wh

### Power Adapter

65W USB-C® (3-pin)

## DESIGN

### Display<sup>(12)(13)</sup>

14" FHD (1920x1080) IPS 250nits Anti-glare, 45% NTSC

### Keyboard

Non-backlit, English (UK)

### Case Color

Thunder Black

### Case Material

PC-ABS (Top), PC-ABS (Bottom)

### Dimensions (WxDxH)<sup>(14)</sup>

325.4 x 217 x 19.83 mm (12.81 x 8.54 x 0.78 inches)

### Weight<sup>(15)</sup>

Starting at 1.39 kg (3.06 lbs)

## CONNECTIVITY

### Ethernet

100/1000M (RJ-45)

### WLAN + Bluetooth<sup>(16)(17)</sup>

Intel Wi-Fi® 6 AX201, 11ax 2x2 + BT5.1

### WWAN

WWAN Upgradable to 4G

### Standard Ports

- 1x USB 3.2 Gen 1
- 1x USB 3.2 Gen 1 (Always On)
- 1x USB-C 3.2 Gen 1 (support data transfer, Power Delivery 3.0 and DisplayPort™ 1.4)
- 1x Thunderbolt™ 4 / USB4® 40Gbps (support data transfer, Power Delivery 3.0 and DisplayPort 1.4)
- 1x HDMI® 2.1, up to 4K/60Hz
- 1x microSD card reader
- 1x Ethernet (RJ-45)
- 1x Headphone / microphone combo jack (3.5mm)

### Optional Ports (configured)

- 1x Nano-SIM Card Slot
- 1x Smart Card Reader

### Docking

Various docking solutions supported via Thunderbolt or USB-C.

For more compatible docking solutions, please visit [Docking for ThinkPad® L14 Gen 3 \(Intel\)](#)

## SECURITY & PRIVACY

### Smart Card Reader

Smart Card Reader

### Security Chip

Discrete TPM 2.0 Enabled

### Fingerprint Reader

Touch Style, Match-on-Chip, Integrated in Power Button

### Physical Locks

Kensington® Nano Security Slot™, 2.5 x 6 mm

### Other Security

- Camera privacy shutter
- Glance by Mirametrix®
- Tile ready

## MANAGEABILITY

### System Management

Non-vPro®

## SERVICE

### Base Warranty

3-year, Courier or Carry-in

## CERTIFICATIONS

### Green Certifications

- ErP Lot 3
- TCO Certified
- RoHS compliant

### Mil-Spec Test

MIL-STD-810H military test passed

## MODEL

TopSeller : Yes

Announce Date : 2022-08-18

EAN / UPC / JAN : 0196802803625

End of Support : 2028-12-12



intel

To see more note information, please link to [https://psref.lenovo.com/Detail/ThinkPad\\_L14\\_Gen\\_3\\_Intel?M=21C1007VUE](https://psref.lenovo.com/Detail/ThinkPad_L14_Gen_3_Intel?M=21C1007VUE).

· Lenovo reserves the right to change specifications or other product information without notice.  
· Product image on this page is a sample, it may not match the real color of this model  
· Battery life is an estimated maximum. Actual battery life may vary based on many factors, including screen brightness, active applications, features, power management settings, battery age and conditioning, and other customer preferences

## Premier Support - A direct 24x7x365 line to our most elite technicians.



Advanced technical support, 24x7x365, in more than 100 markets



Technical Account Managers for proactive relationship and escalation management



Comprehensive hardware & OEM software support



Priority on service delivery and repair parts



Single point of contact for simplified end-to-end case management



Lenovo Service Connect Portal for customized reporting and product support

## Accidental Damage Protection - Protection of your PC from the unexpected.

Experience shows that a significant portion of devices may be damaged (and not covered under warranty) in the first three years. Lenovo's Accidental Damage Protection service covers accidents beyond the system warranty such as drops, spills, bumps and even electrical surges. Make sure your new device has maximum protection, avoid unplanned costs and get peace of mind.

## Base Warranty - Included with the systems you purchase, default 1- or 3-year coverage window.

## Warranty Extensions & Upgrades - Service and protection that's right for your circumstances.

- Pick Up & Return Courier
- Onsite Support
- Technician Installed Customer
- Replaceable Unit Service
- International Warranty Upgrade

Lenovo may not offer the products, services or features discussed in this document in all regions. Lenovo may withdraw an offering at any time. Information is subject to change without notice. Consult your local representative for information on offerings available in your area. Lenovo reserves the right to change specifications or other product information without notice. Lenovo is not responsible for photographic or typographical errors. Lenovo provides this publication "as is" without warranty of any kind, either express or implied, including the implied warranties of merchantability or fitness for a particular purpose.

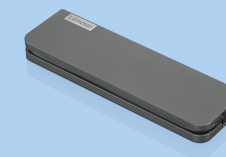
## Recommended Accessories



### ThinkPad USB-C Dock Gen 2

40AS0090US

- Lenovo understands that modern business depends on a wide variety of PC's and even brands to meet their business needs. To make this easier Lenovo USB-C dock is compatible with Lenovo notebooks as well as note...



### Lenovo USB-C Mini Dock\_US

40AU0065US

Expand Your Potential with An Universal Mini Dock; Lenovo understands that modern business depends on a wide variety of PC's and even brands to meet their business needs. To make this easier Lenovo USB-C Mini dock is ...

For a full list of accessories and services, please visit:  
<https://smartfind.Lenovo.com>

Lenovo

PSREF  
Product Specifications  
Reference